

# 4-Sided Pop Up Portable Booth

7.4' x 7.4'

vispronet®

**Finished Print Size: 7.4' x 7.4' (W x H)**

**Data Format: 521.0cm x 231.3cm (finished print size & bleed)**

## WE USE A FULLY AUTOMATED ARTWORK CHECKING SYSTEM

- To ensure the quickest and most accurate verification and reproduction of your artwork, please use the template on page 2.
- Follow all artwork specifications & guidelines and do not alter the template lines, artboard (Adobe® Illustrator®) or canvas size (Adobe® Photoshop®).
- You must follow these instructions to ensure your delivery time.
- For a full list of artwork specifications & requirements, please visit our website.

## THINGS TO DO:

- Extend all artwork out to the templates magenta bleed line.
- Keep text, logos & important images inside the gray image safety line or they might get cut off.
- Outline all fonts.
- Embed all placed images.
- If using Adobe® Photoshop®, delete all template lines before submitting your file.
- Design with 100% opaque PANTONE® Color Bridge® colors for more accurate color reproduction.\*
- Submit all artwork files in CMYK color space mode.
- ONLY SAVE AND SEND PAGE 2 WITH YOUR ARTWORK.

## THINGS TO KNOW:

- The template is at 1:10 scale. DO NOT resize it.
- A minimum resolution of 360dpi is required for all raster (pixel) images. Higher resolutions are preferred.
- DO NOT alter the template in any way.
- If multiple images are selected for a product, submit one file per image.
- For multiple print and/or double print products, please design on all layouts within the template even if the layout graphics are the same.

## MAIN TEMPLATE LINES:

### BLEED LINE:

The MAGENTA line shows the bleed line. Please extend artwork to this line if it goes to or past the finished size.

### FINISHED SIZE LINE:

The CYAN line shows the finished size.

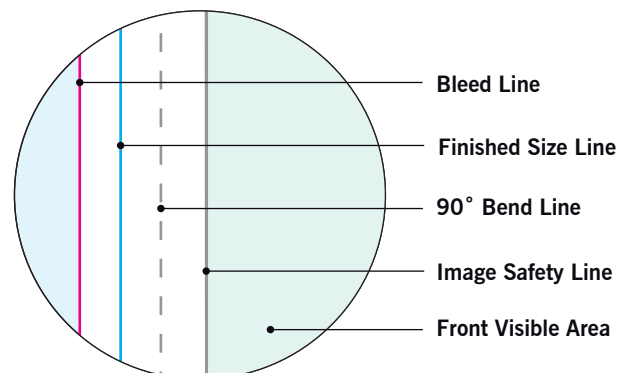
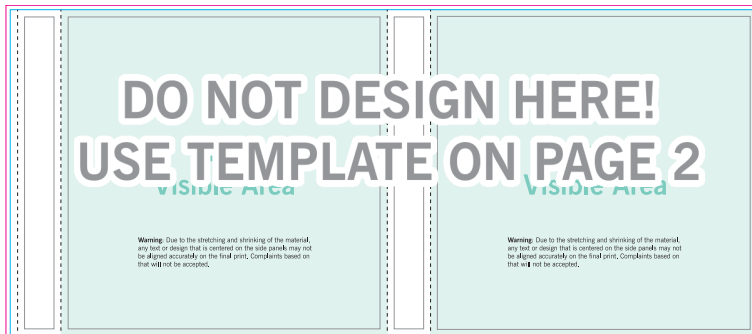
### STITCHING LINE:

The BLACK line shows the stitching line.

### IMAGE SAFETY LINE:

The GREY line shows the image safety line. Keep all text, logos & important images inside the safety line or they might get cut off.

**Warning: Due to the stretching and shrinking of the material, any text or design that is centered on the side panels may not be aligned accurately on the final print. Complaints based on that will not be accepted.**



\* Due to the nature of the CMYK printing process, the reproduction of PANTONE® colors is not always 100% possible. Please reference a Pantone® Color Bridge® book to receive a process color simulation. Further information can be found on our website.



The diagram illustrates a two-page spread of a document. It features a central gutter where the pages meet. On the left side, there is a white rectangular area representing the left margin or side panel. To its right is a large light blue rectangular area representing the front visible area. On the right side, there is a white rectangular area representing the right margin or side panel. To its left is a large light blue rectangular area representing the back visible area. Dashed vertical lines indicate the boundaries of these areas. The text 'Front Visible Area' is centered in the left light blue area, and 'Back Visible Area' is centered in the right light blue area. A warning message is located at the bottom of each light blue area.

# Front Visible Area

**Warning:** Due to the stretching and shrinking of the material, any text or design that is centered on the side panels may not be aligned accurately on the final print. Complaints based on that will not be accepted.

# Back Visible Area

**Warning:** Due to the stretching and shrinking of the material, any text or design that is centered on the side panels may not be aligned accurately on the final print. Complaints based on that will not be accepted.