

Pop Up Portable Booth 7.4' x 2.5'

With Sides

vispronet®

Finished Print Size: 9.4' x 2.5' (W x H)

Data Format: 304.0cm x 82.6cm (finished print size & bleed)

WE USE A FULLY AUTOMATED ARTWORK CHECKING SYSTEM

- To ensure the quickest and most accurate verification and reproduction of your artwork, please use the template on page 2.
- Follow all artwork specifications & guidelines and do not alter the template lines, artboard (Adobe® Illustrator®) or canvas size (Adobe® Photoshop®).
- You must follow these instructions to ensure your delivery time.
- For a full list of artwork specifications & requirements, please visit our website.

THINGS TO DO:

- Extend all artwork out to the templates magenta bleed line.
- Keep text, logos & important images inside the gray image safety line or they might get cut off.
- Outline all fonts.
- Embed all placed images.
- If using Adobe® Photoshop®, delete all template lines before submitting your file.
- Design with 100% opaque PANTONE® Color Bridge® colors for more accurate color reproduction.*
- Submit all artwork files in CMYK color space mode.
- ONLY SAVE AND SEND PAGE 2 WITH YOUR ARTWORK.

THINGS TO KNOW:

- The template is at 1:10 scale. DO NOT resize it.
- A minimum resolution of 360dpi is required for all raster (pixel) images. Higher resolutions are preferred.
- DO NOT alter the template in any way.
- If multiple images are selected for a product, submit one file per image.
- For multiple print and/or double print products, please design on all layouts within the template even if the layout graphics are the same.

MAIN TEMPLATE LINES:

BLEED LINE:

The MAGENTA line shows the bleed line. Please extend artwork to this line if it goes to or past the finished size.

FINISHED SIZE LINE:

The CYAN line shows the finished size.

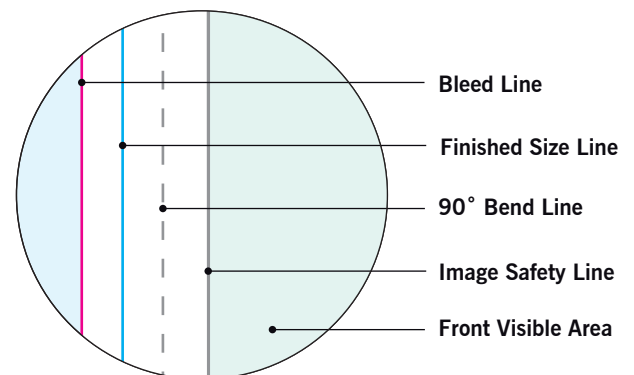
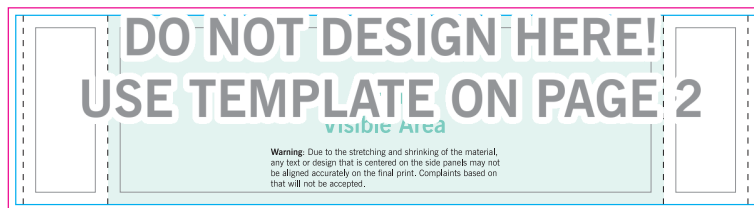
STITCHING LINE:

The BLACK line shows the stitching line.

IMAGE SAFETY LINE:

The GREY line shows the image safety line. Keep all text, logos & important images inside the safety line or they might get cut off.

Warning: Due to the stretching and shrinking of the material, any text or design that is centered on the side panels may not be aligned accurately on the final print. Complaints based on that will not be accepted.



* Due to the nature of the CMYK printing process, the reproduction of PANTONE® colors is not always 100% possible. Please reference a Pantone® Color Bridge® book to receive a process color simulation. Further information can be found on our website.



The diagram illustrates a front panel layout. It features a central rectangular area with a light blue background, labeled 'Front Visible Area'. This central area is flanked by two white rectangular side panels. The entire layout is enclosed within a blue border. Dashed vertical lines are positioned on the left and right sides, indicating the boundaries of the side panels. The central area is defined by a solid black border.

Front Visible Area

Warning: Due to the stretching and shrinking of the material, any text or design that is centered on the side panels may not be aligned accurately on the final print. Complaints based on that will not be accepted.