

# Pop Up Tent Deluxe Wall 10.0'

Wall with 2 Rectangular Windows - Double Sided

**vispronet**<sup>®</sup>

**Finished Print Size: 10.0' x 6.5' (W x H)**

**Data Format: 623.7cm x 204.7cm (finished print size & bleed)**

## WE USE A FULLY AUTOMATED ARTWORK CHECKING SYSTEM

- To ensure the quickest and most accurate verification and reproduction of your artwork, please use the template on page 2.
- Follow all artwork specifications & guidelines and do not alter the template lines, artboard (Adobe® Illustrator®) or canvas size (Adobe® Photoshop®).
- You must follow these instructions to ensure your delivery time.
- For a full list of artwork specifications & requirements, please visit our website.

## THINGS TO DO:

- Extend all artwork out to the templates magenta bleed line.
- Keep text, logos & important images inside the gray image safety line or they might get cut off.
- Outline all fonts.
- Embed all placed images.
- If using Adobe® Photoshop®, delete all template lines before submitting your file.
- Design with 100% opaque PANTONE® Color Bridge® colors for more accurate color reproduction.\*
- Submit all artwork files in CMYK color space mode.
- ONLY SAVE AND SEND PAGE 2 WITH YOUR ARTWORK.

## THINGS TO KNOW:

- The template is at 1:10 scale. DO NOT resize it.
- A minimum resolution of 800dpi is required for all raster (pixel) images. Higher resolutions are preferred.
- DO NOT alter the template in any way.
- DO NOT use any of the template spot colors in your artwork. Anything using these colors is viewed as part of the template and is automatically removed by our system.
- If multiple images are selected for a product, submit one file per image.
- For multiple print and/or double print products, please design on all layouts within the template even if the layout graphics are the same.

## MAIN TEMPLATE LINES:

### BLEED LINE:

The MAGENTA line shows the bleed line. Please extend artwork to this line if it goes to or past the finished size.

### FINISHED SIZE LINE:

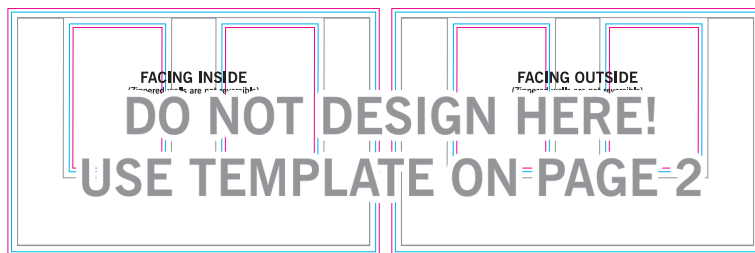
The CYAN line shows the finished size.

### STITCHING LINE:

The BLACK line shows the stitching line.

### IMAGE SAFETY LINE:

The GREY line shows the image safety line. Keep all text, logos & important images inside the safety line or they might get cut off.



\* Due to the nature of the CMYK printing process, the reproduction of PANTONE® colors is not always 100% possible. Please reference a Pantone® Color Bridge® book to receive a process color simulation. Further information can be found on our website.



The diagram shows a large rectangular container with a light gray background. Inside, there are two identical rectangular units positioned side-by-side. Each unit consists of a light gray outer frame and a white inner rectangle. The inner rectangles of both units are facing each other, creating a central space. The text 'FACING INSIDE' is centered in this space, with a note below it stating '(Zippered walls are not reversible)'.

**FACING INSIDE**  
(Zippered walls are not reversible)



The diagram shows a large rectangular container with a light gray background. Inside, there are two identical rectangular units positioned side-by-side. Each unit consists of a light gray outer frame and a white inner rectangle. The inner rectangles of both units are facing away from each other, towards the outer walls of the container. The text 'FACING OUTSIDE' is centered in the space between the units, with a note below it stating '(Zippered walls are not reversible)'.

**FACING OUTSIDE**  
(Zippered walls are not reversible)