

# Pop Up Tent Deluxe Wall 10.0'

## Wall with 2 Round Windows - Double Sided

**vispronet**<sup>®</sup>

**Finished Print Size: 10.0' x 6.5' (W x H)**

**Data Format: 623.7cm x 204.7cm (finished print size & bleed)**

### WE USE A FULLY AUTOMATED ARTWORK CHECKING SYSTEM

- To ensure the quickest and most accurate verification and reproduction of your artwork, please use the template on page 2.
- Follow all artwork specifications & guidelines and do not alter the template lines, artboard (Adobe® Illustrator®) or canvas size (Adobe® Photoshop®).
- You must follow these instructions to ensure your delivery time.
- For a full list of artwork specifications & requirements, please visit our website.

### THINGS TO DO:

- Extend all artwork out to the templates magenta bleed line.
- Keep text, logos & important images inside the gray image safety line or they might get cut off.
- Outline all fonts.
- Embed all placed images.
- If using Adobe® Photoshop®, delete all template lines before submitting your file.
- Design with 100% opaque PANTONE® Color Bridge® colors for more accurate color reproduction.\*
- Submit all artwork files in CMYK color space mode.
- ONLY SAVE AND SEND PAGE 2 WITH YOUR ARTWORK.

### THINGS TO KNOW:

- The template is at 1:10 scale. DO NOT resize it.
- A minimum resolution of 800dpi is required for all raster (pixel) images. Higher resolutions are preferred.
- DO NOT alter the template in any way.
- DO NOT use any of the template spot colors in your artwork. Anything using these colors is viewed as part of the template and is automatically removed by our system.
- If multiple images are selected for a product, submit one file per image.
- For multiple print and/or double print products, please design on all layouts within the template even if the layout graphics are the same.

### MAIN TEMPLATE LINES:

#### BLEED LINE:

The MAGENTA line shows the bleed line. Please extend artwork to this line if it goes to or past the finished size.

#### FINISHED SIZE LINE:

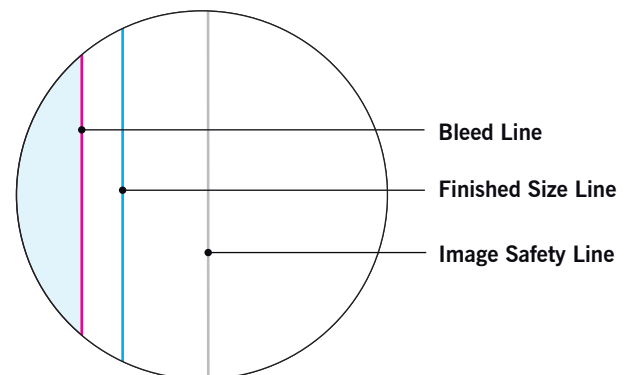
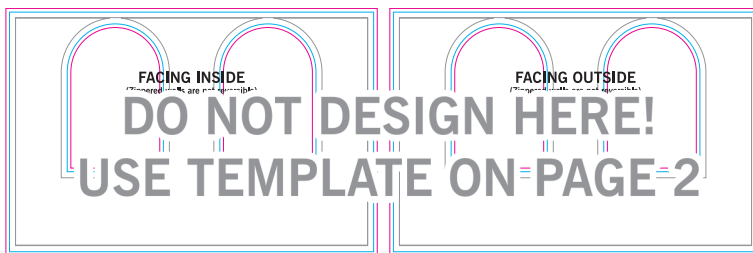
The CYAN line shows the finished size.

#### STITCHING LINE:

The BLACK line shows the stitching line.

#### IMAGE SAFETY LINE:

The GREY line shows the image safety line. Keep all text, logos & important images inside the safety line or they might get cut off.



\* Due to the nature of the CMYK printing process, the reproduction of PANTONE® colors is not always 100% possible. Please reference a Pantone® Color Bridge® book to receive a process color simulation. Further information can be found on our website.



The diagram shows a rectangular container with a light gray background. It features two identical arched openings side-by-side. Each arch is defined by three concentric lines: a gray outer line, a blue middle line, and a magenta inner line. The magenta line forms the innermost boundary of the arch. The text "FACING INSIDE" is centered between the two arches, with the subtitle "(Zippered walls are not reversible)" below it.

**FACING INSIDE**  
(Zippered walls are not reversible)



The diagram shows a rectangular container with a light gray background, identical in structure to the first one. It features two identical arched openings side-by-side, each defined by concentric gray, blue, and magenta lines. In this configuration, the magenta line is the outermost boundary of the arch. The text "FACING OUTSIDE" is centered between the two arches, with the subtitle "(Zippered walls are not reversible)" below it.

**FACING OUTSIDE**  
(Zippered walls are not reversible)